



## NEW DOWELL ELEMENTARY SCHOOL CONSOLIDATING SCHUSTER AND CROSBY

**COMMUNITY MEETING – NOV. 13, 2017**



**EL PASO**

INDEPENDENT SCHOOL DISTRICT

**VIGIL & ASSOCIATES**

ARCHITECTURAL GROUP, P.C.

575.527.0040 [www.VA-architects.com](http://www.VA-architects.com)



## AGENDA 11.13.17

- I. Introductions
- II. Presentation of Overall Project Scope
- III. Programming Phase Review
- IV. Update/Status of Current Design Phase: Schematic Design
- V. Schematic Design Process Diagrams
- VI. Break Up Into 4 Groups - Design Charrette Workstations;
  - a. Building Planning
  - b. Form & Materials
  - c. Learning Environments
  - d. Site & Landscaping
- VII. Summary of Group Workstations
- VIII. Adjourn

**EL PASO**

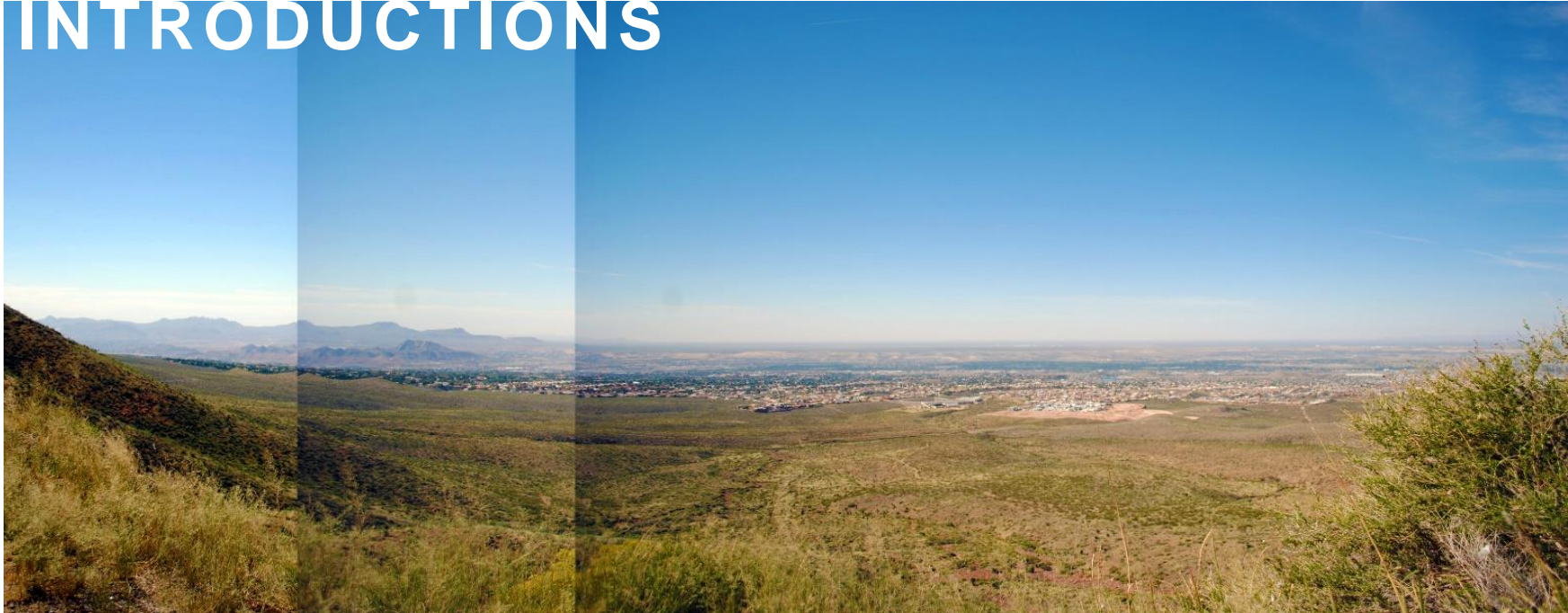
INDEPENDENT SCHOOL DISTRICT

**VIGIL & ASSOCIATES**  
ARCHITECTURAL GROUP, P.C.

575.527.0040 www.VA-architects.com



# INTRODUCTIONS



**EL PASO**

INDEPENDENT SCHOOL DISTRICT

**VIGIL & ASSOCIATES**  
ARCHITECTURAL GROUP, P.C.

575.527.0040 [www.VA-architects.com](http://www.VA-architects.com)



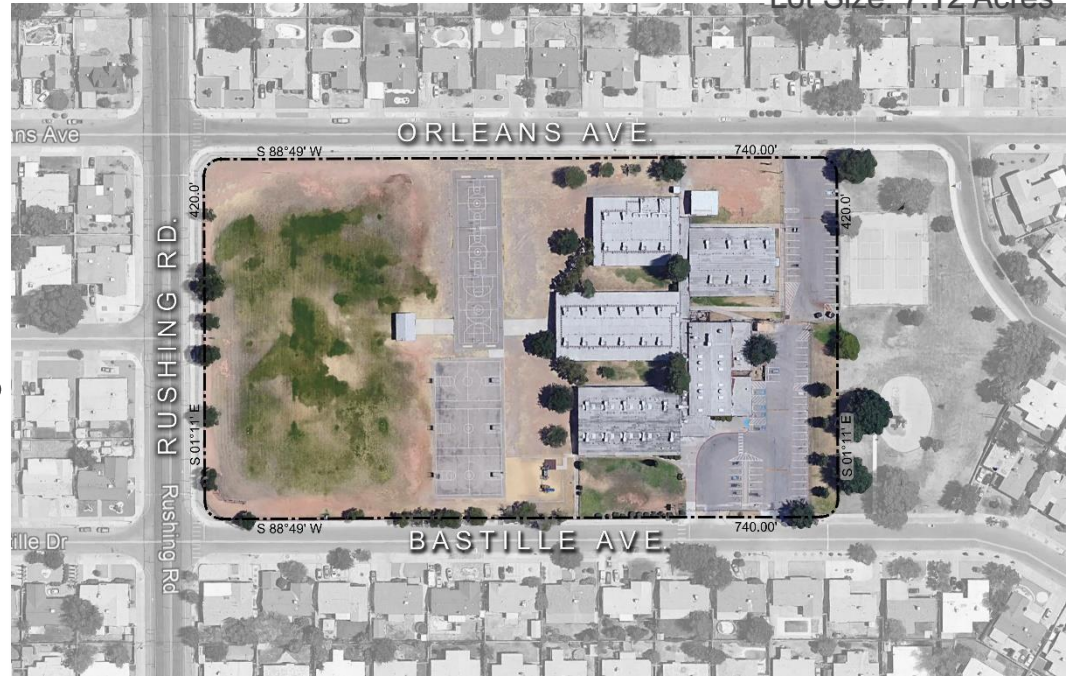
## PRESENTATION OF OVERALL PROJECT SCOPE

Zoned: R-4

Lot Size: 7.12 Acres



- New 2-story Elementary School (Pre-k thru 5<sup>th</sup>)  
Consolidation of Dowell ES, Schuster ES & Crosby ES
- New Construction: Approximately 100,000 sq.ft.
- Includes new separate bus & parent drop off/pick up areas and a new parking lot.
- Demolition: Approximately 52,000 sq.ft.  
(only includes existing Dowell Elementary School)



EL PASO

INDEPENDENT SCHOOL DISTRICT

VIGIL &amp; ASSOCIATES

ARCHITECTURAL GROUP, P.C.

575.527.0040 www.VA-architects.com





## PRESENTATION OF OVERALL PROJECT SCOPE



## PROJECT BUDGET

- Total Project Cost: \$28,300, 983
- 100% Construction Cost Limit (CCL): \$21,805,000  
(Approx. \$500k Demolition)
- Design to 90% CCL: \$19,624,500



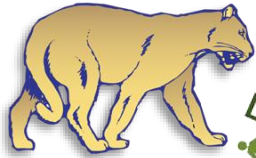
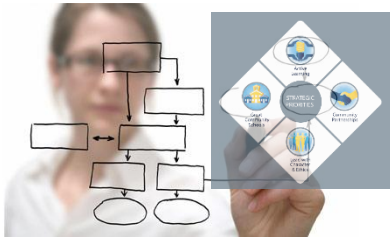
EL PASO

INDEPENDENT SCHOOL DISTRICT

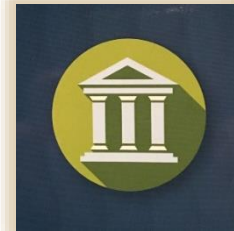
VIGIL & ASSOCIATES  
ARCHITECTURAL GROUP, P.C.  
575.527.0040 www.VA-architects.com



## DESIGN PHASE REVIEW PROCESS



COMM[UNITY]



EL PASO

INDEPENDENT SCHOOL DISTRICT

VIGIL & ASSOCIATES  
ARCHITECTURAL GROUP, P.C.

575.527.0040 www.VA-architects.com



## DESIGN PHASE REVIEW

21<sup>ST</sup> CENTURY LEARNING ENVIRONMENTS

- Fully integrated approach to discovery-based learning that prepares students for a successful future
- Classroom pods and neighborhoods
- Large group collaboration areas and nooks for individual or small group learning located throughout campus
- Integrated technology
- Design “through the eyes of a child” with sensitivity to children’s scale
- Flexible Space Design



George I. Sanchez Collaborative Community School  
Albuquerque Public Schools  
Jon Anderson Architecture



EL PASO

INDEPENDENT SCHOOL DISTRICT

VIGIL & ASSOCIATES  
ARCHITECTURAL GROUP, P.C.

575.527.0040 www.VA-architects.com





## DESIGN PHASE REVIEW

### 21<sup>ST</sup> CENTURY LEARNING ENVIRONMENTS

- Adaptable and flexible spaces
- School building and the local community
- Embrace virtual education
- Protected exterior space as an extension of the learning space
- Secure facility that is also open, collaborative and welcoming



George I. Sanchez Collaborative Community School  
Albuquerque Public Schools  
Jon Anderson Architecture





## DESIGN PHASE REVIEW



## TYPICAL ARCHITECTURAL SERVICES

- PROGRAMMING
- SCHEMATIC DESIGN
- DESIGN DEVELOPMENT
- CONSTRUCTION DOCUMENTS
- CONSTRUCTION ADMINISTRATION



EL PASO

INDEPENDENT SCHOOL DISTRICT

VIGIL & ASSOCIATES  
ARCHITECTURAL GROUP, P.C.

575.527.0040 www.VA-architects.com



## PROGRAMMING PHASE REVIEW

### PROGRAM LIST OF SPACES

- 43 PRE-K THRU 5<sup>TH</sup> GRADE CLASSROOMS (with 21 century learning environments)**
- 2 SPECIAL EDUCATION SUITES**
- 1 ART CLASSROOM**
- 1 SCIENCE CLASSROOM**
- 1 PHYSICAL EDUCATION / CAFETERIA MULTIPURPOSE ROOM**
- 1 FULL SERVICE KITCHEN**
- 1 MEDIA CENTER / COMPUTER LAB**
- 1 ADMINISTRATION & OTHER SUPPORT AREAS**

**EL PASO**

INDEPENDENT SCHOOL DISTRICT

VIGIL & ASSOCIATES  
ARCHITECTURAL GROUP, P.C.

575.527.0040 www.VA-architects.com



## ACADEMIC CORE CLASSROOMS

Classroom Area Minimum of 820 Square Feet.  
Square-Footage-Per-Student Standards  
and Requirements

### Flex Spaces

Spaces Cross Programmed with Specialized  
Classrooms  
Project Display and Presentation  
Configurable Furnishings and Storage

### Classrooms/Learning Studios

Portable Teaching Station  
Flexible Student Furnishings  
Storage Configuration  
Portable/Cubbies/Teaching  
Wall/Coat Storage/Etc  
Touch Screen Displays  
Sinks/Refrigerator/Microwave at  
Lower Grade Levels  
Direct Access to Outdoor Learning Areas  
Separate Outdoor Play Areas for Lower  
Grade Levels

### Teacher Collaboration Spaces

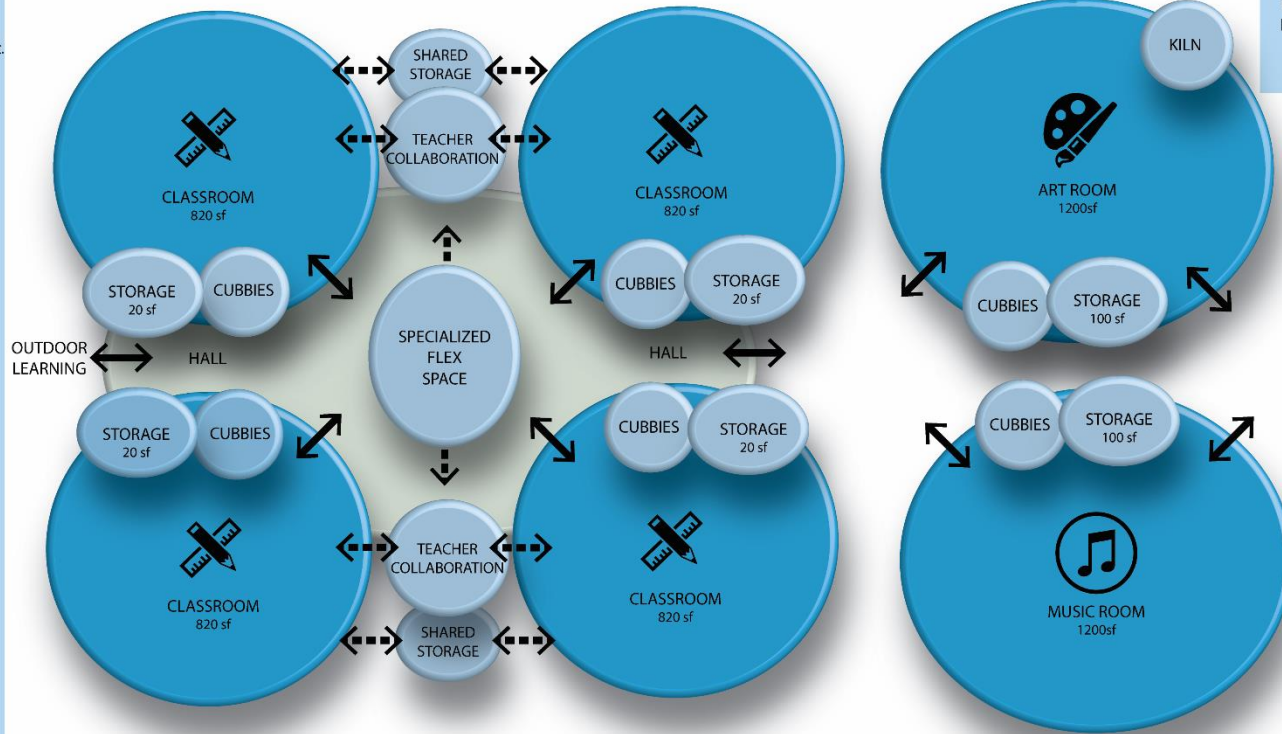
Conference Space  
Kitchenette

### (Art)

Northern Lighting  
Display Cases and Tackboards  
Direct Access to Outdoor Classroom  
Sink w/Clay-Plaster Trap  
Kiln Room  
(Display of Student Art Throughout School)

### (Teaching Personnel)

Teacher Planning / Workroom  
Teacher Lounge  
Book Room



New Dowell Elementary School - Programming Diagrams - Vigil & Associates - Sept. 2017



EL PASO

INDEPENDENT SCHOOL DISTRICT

VIGIL & ASSOCIATES  
ARCHITECTURAL GROUP, P.C.

575.527.0040 www.VA-architects.com



## SPECIALIZED CLASSROOMS

### Special Education

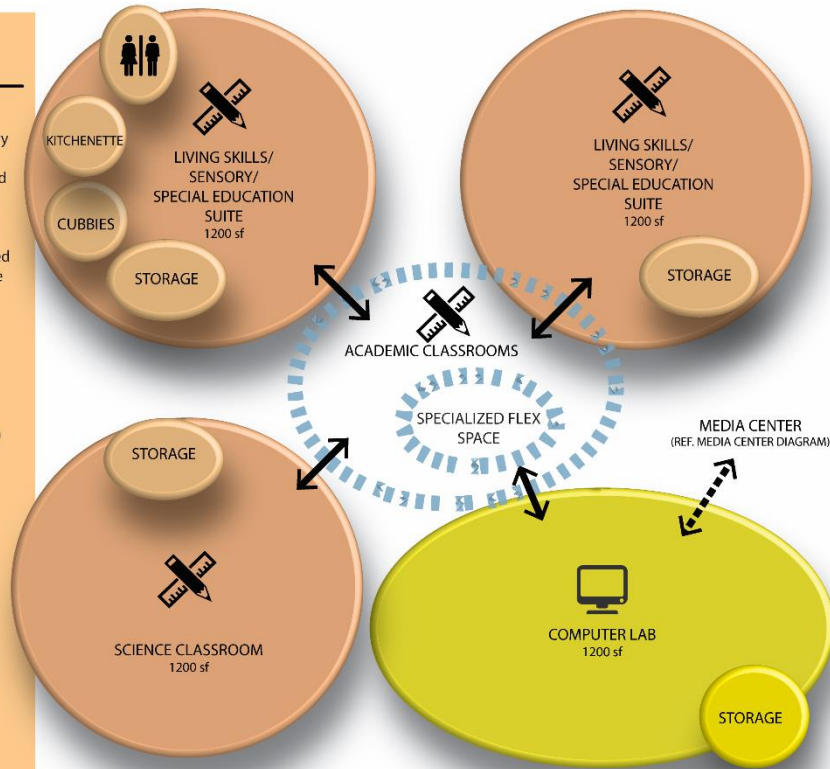
Dedicated Living Skills/Sensory /Special Education Suite  
Flex Spaces Cross Programmed with Special Education Uses

### Science Classroom

Types of Work Being Performed  
Stain and Chemical Resistance  
Teacher Planning Area  
Storage Requirements

### Computer Lab

Near Media Center  
Flexible Furnishings  
Seamless Technology  
Over-the-shoulder Instruction  
Work Display and Review



New Dowell Elementary School - Programming Diagrams - Vigil & Associates - Sept. 2017



EL PASO

INDEPENDENT SCHOOL DISTRICT

VIGIL & ASSOCIATES  
ARCHITECTURAL GROUP, P.C.

575.527.0040 www.VA-architects.com





## PHYSICAL EDUCATION/ FOOD SERVICE

### Cafeteria

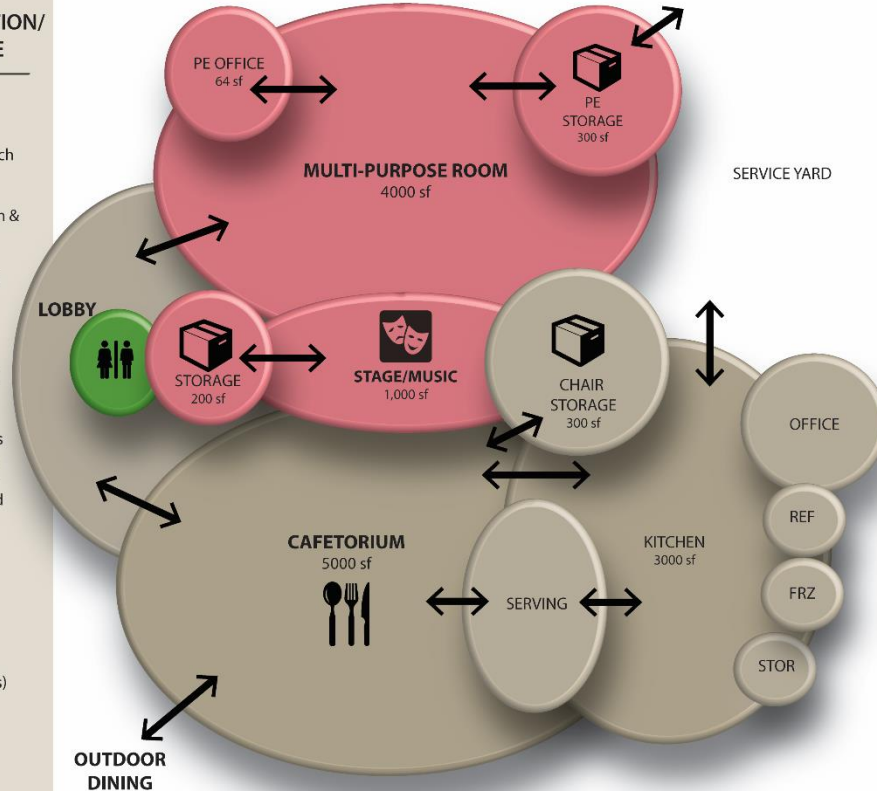
Full Service Kitchen  
Sized for Grade Level Lunch  
Periods  
Recycling Center  
Communication with Gym &  
Commons for Cross  
Programming  
Access to Outdoor Dining  
Cafetorium Sized for 1/3  
Student Population

### Multi-Purpose Room

Available for After School  
Events  
Communication with  
Cafetorium & Commons  
for Cross Programming  
Public Restrooms Nearby  
Geared Toward Skill Based  
Curriculum & Multiple  
Activities  
Adjustable Goalposts

### Music

Shared with Stage Space  
Sound Attenuation  
(Non-parallel Walls)  
Instrument Storage  
Music Library  
Access to Outdoor  
Amphitheatre



New Dowell Elementary School - Programming Diagrams - Vigil & Associates - Sept. 2017



**EL PASO**

INDEPENDENT SCHOOL DISTRICT

**VIGIL & ASSOCIATES**  
ARCHITECTURAL GROUP, P.C.

575.527.0040 www.VA-architects.com



## MEDIA CENTER / COMPUTER LEARNING

### Media Center

Circulation Desk to have Visual Access to Most Areas

Crossover with Commons for Greater Functionality

Instructional/Workstudy/Breakout Areas

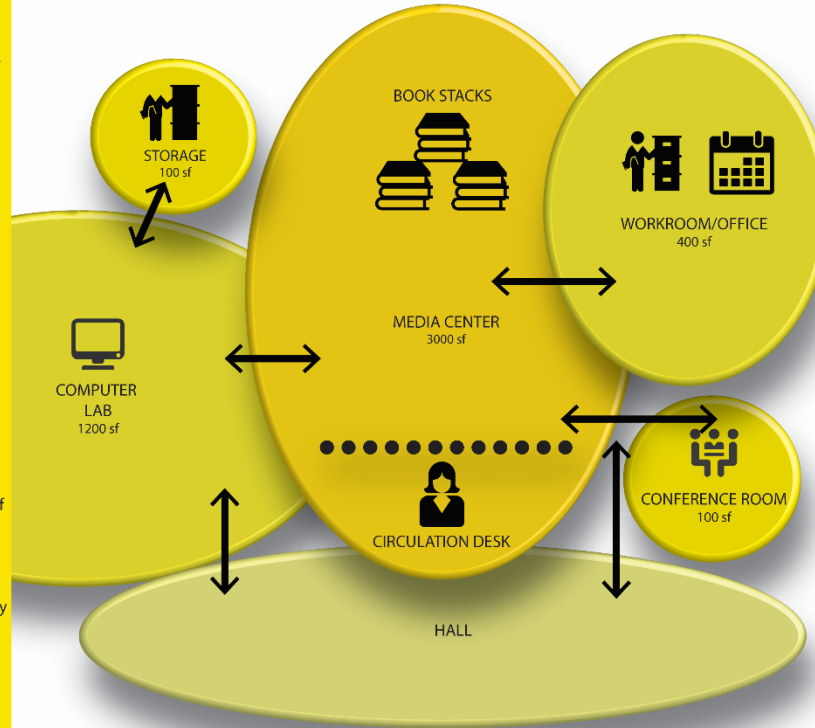
Storytelling/Videos/Presentations

Display Options

### Computer Lab

School Computer Lab which should house a minimum of 26 student computer stations (30 maximum) for testing.

Crossover with Media Center for Greater Functionality and flexibility in future use.



New Dowell Elementary School - Programming Diagrams - Vigil & Associates - Sept. 2017



EL PASO

INDEPENDENT SCHOOL DISTRICT

VIGIL & ASSOCIATES  
ARCHITECTURAL GROUP, P.C.

575.527.0040 www.VA-architects.com





## ADMINISTRATION

### Administration

Reception Desk Located At &  
Have Visual Control of School's  
Main Entry Point  
Principal's Office  
Observe Main Entrance  
Small Conference  
Assistant Principal  
Direct Access to Secure  
Storage  
Small Conference  
Conference Room Accessible  
to Visitors  
File/Storage Rooms to be Secure,  
Fireproof and Lockable  
Mother Friendly Workplace

### Nurse's Suite

Four Cots  
Accessible Restrooms  
Storage for Medication/  
Supplies/Wheelchair

### Clerical

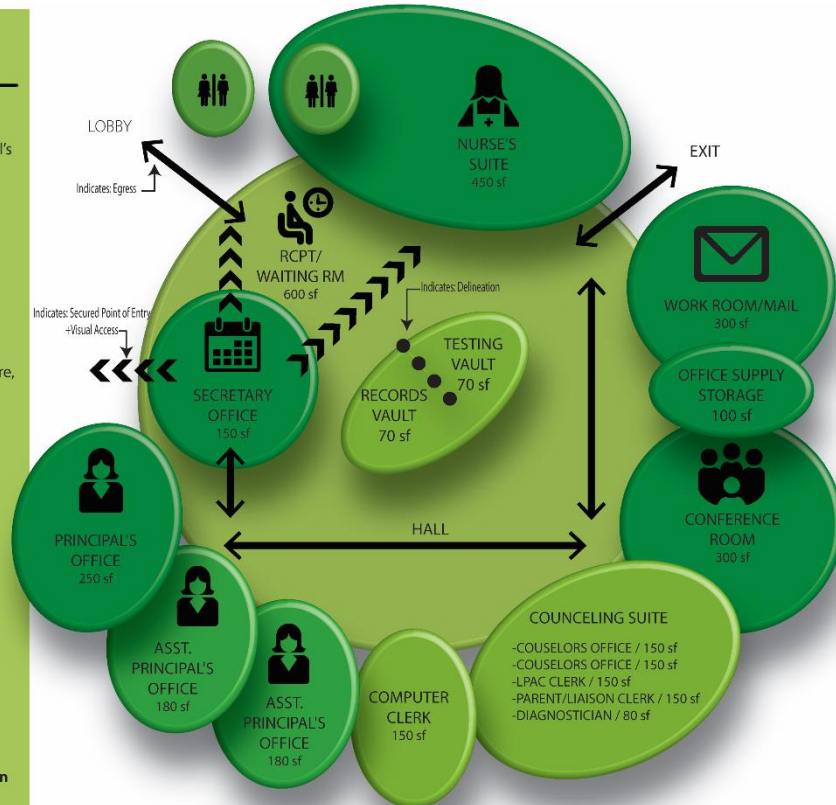
Access to Student Records

### Counselor's Suite

Strong Relationship w/Admin  
but not Shared  
Support Confidential Nature  
of Work Speech Diagnosis in  
Flex Space

### Mother Friendly Space Design

Per Texas Design Standards



New Dowell Elementary School - Programming Diagrams - Vigil & Associates - Sept. 2017



EL PASO

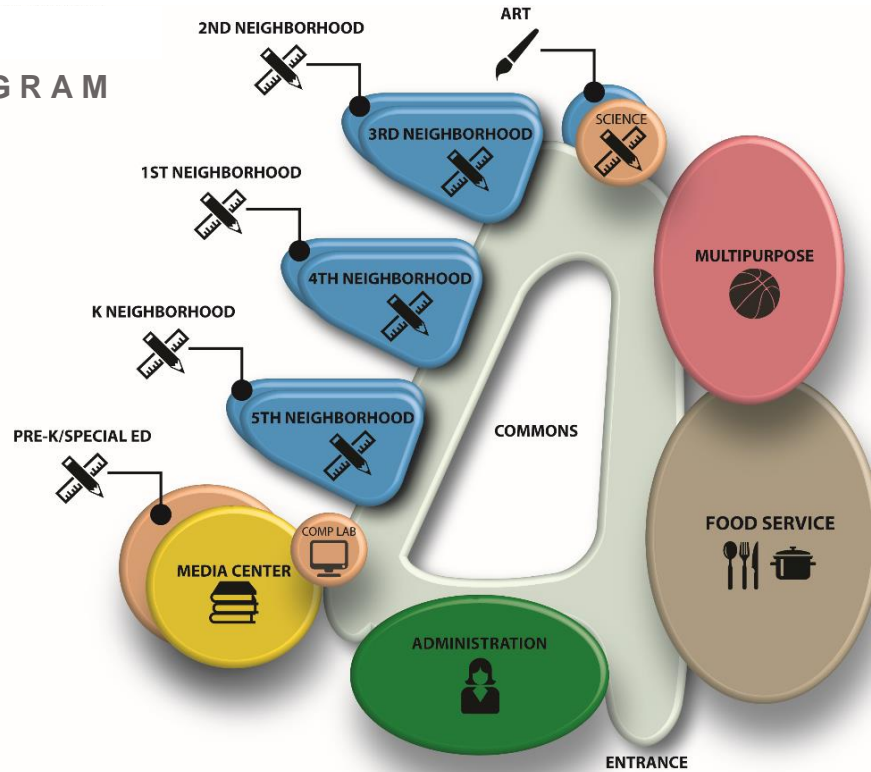
INDEPENDENT SCHOOL DISTRICT

VIGIL & ASSOCIATES  
ARCHITECTURAL GROUP, P.C.

575.527.0040 www.VA-architects.com



## OVERALL SPATIAL DIAGRAM



New Dowell Elementary School - Programming Diagrams - Vigil & Associates - Sept. 2017



**EL PASO**

INDEPENDENT SCHOOL DISTRICT

**VIGIL & ASSOCIATES**  
ARCHITECTURAL GROUP, P.C.

575.527.0040 www.VA-architects.com



## UPDATE/STATUS OF CURRENT DESIGN PHASE (GENERAL OVERVIEW)



**EL PASO**

INDEPENDENT SCHOOL DISTRICT

**VIGIL & ASSOCIATES**

ARCHITECTURAL GROUP, P.C.

575.527.0040 [www.VA-architects.com](http://www.VA-architects.com)





## SCHEMATIC DESIGN PROCESS DIAGRAMS

## CONCEPT A

Academic Core Space

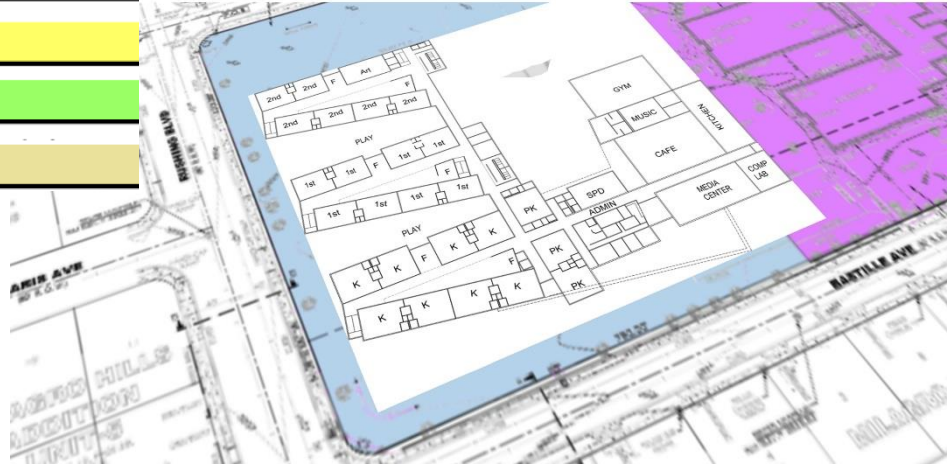
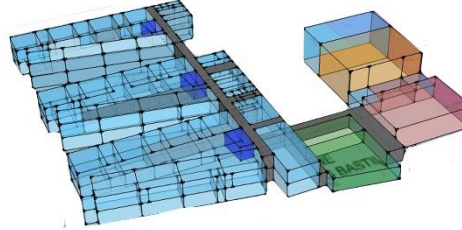
Specialized Classrooms

Physical Education

Media Center

Administration

Food Service



EL PASO

INDEPENDENT SCHOOL DISTRICT

VIGIL & ASSOCIATES  
ARCHITECTURAL GROUP, P.C.

575.527.0040 www.VA-architects.com



## SCHEMATIC DESIGN PROCESS DIAGRAMS

## CONCEPT A

Academic Core Space

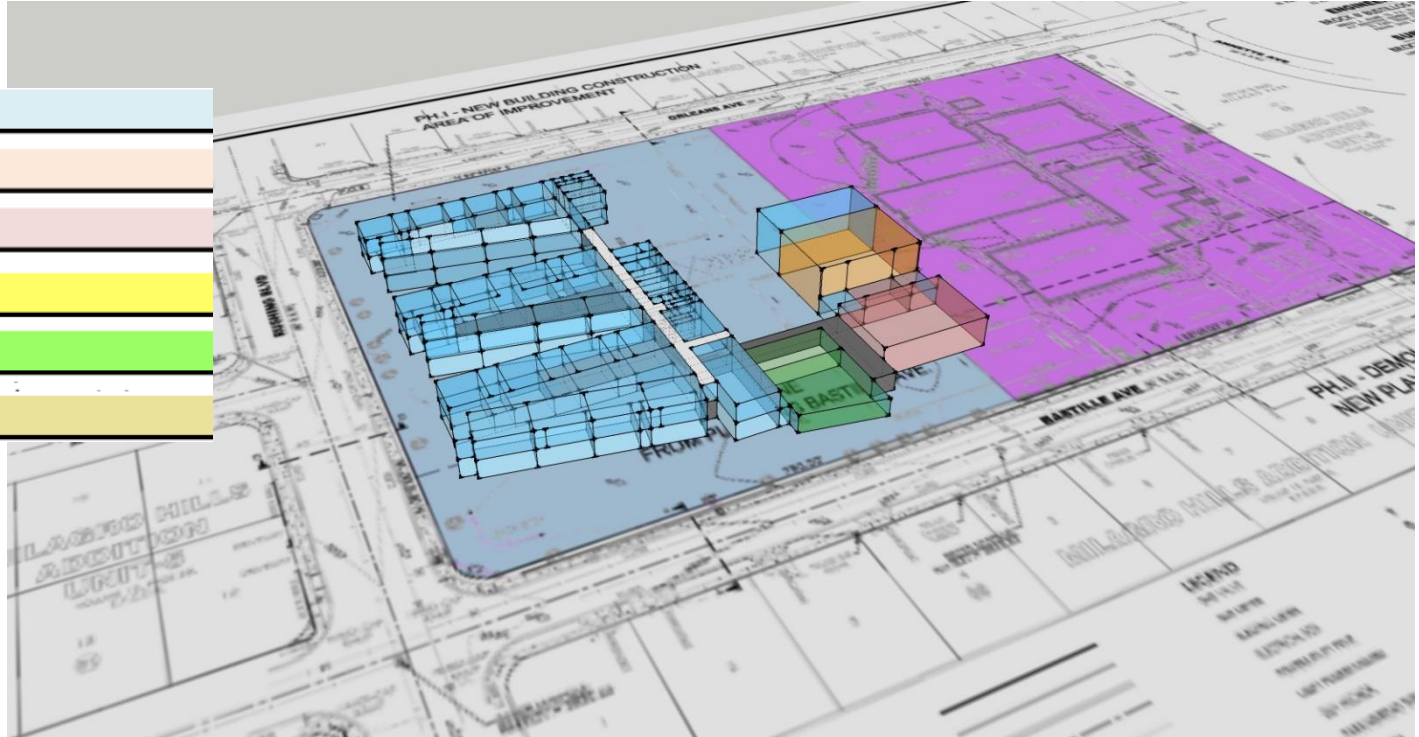
Specialized Classrooms

Physical Education

Media Center

Administration

Food Service



EL PASO

INDEPENDENT SCHOOL DISTRICT

VIGIL &amp; ASSOCIATES

ARCHITECTURAL GROUP, P.C.

575.527.0040 www.VA-architects.com





## SCHEMATIC DESIGN PROCESS DIAGRAMS

## CONCEPT B

Academic Core Space

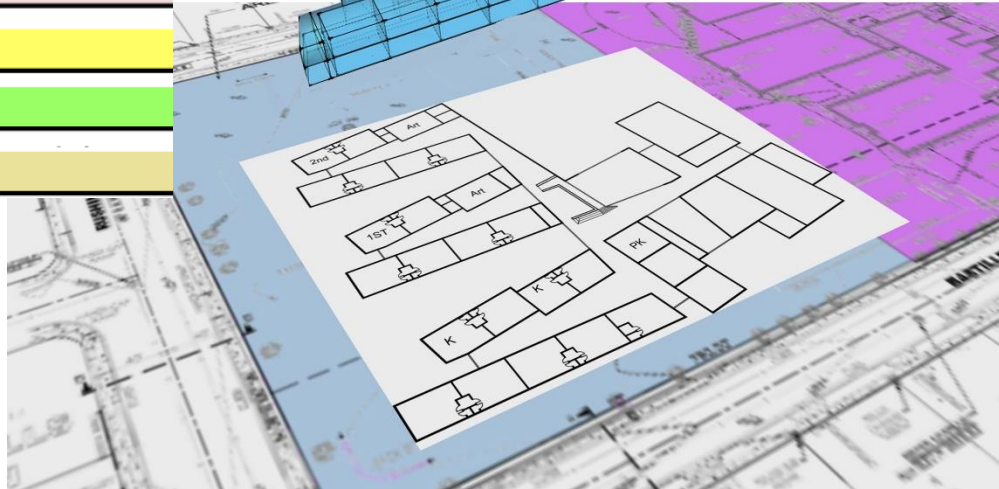
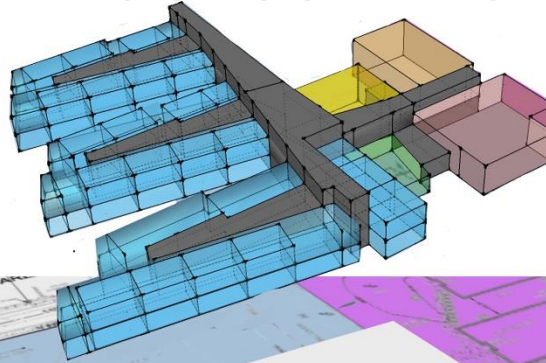
Specialized Classrooms

Physical Education

Media Center

Administration

Food Service



EL PASO

INDEPENDENT SCHOOL DISTRICT

VIGIL & ASSOCIATES  
ARCHITECTURAL GROUP, P.C.

575.527.0040 www.VA-architects.com





## SCHEMATIC DESIGN PROCESS DIAGRAMS

## CONCEPT B

Academic Core Space

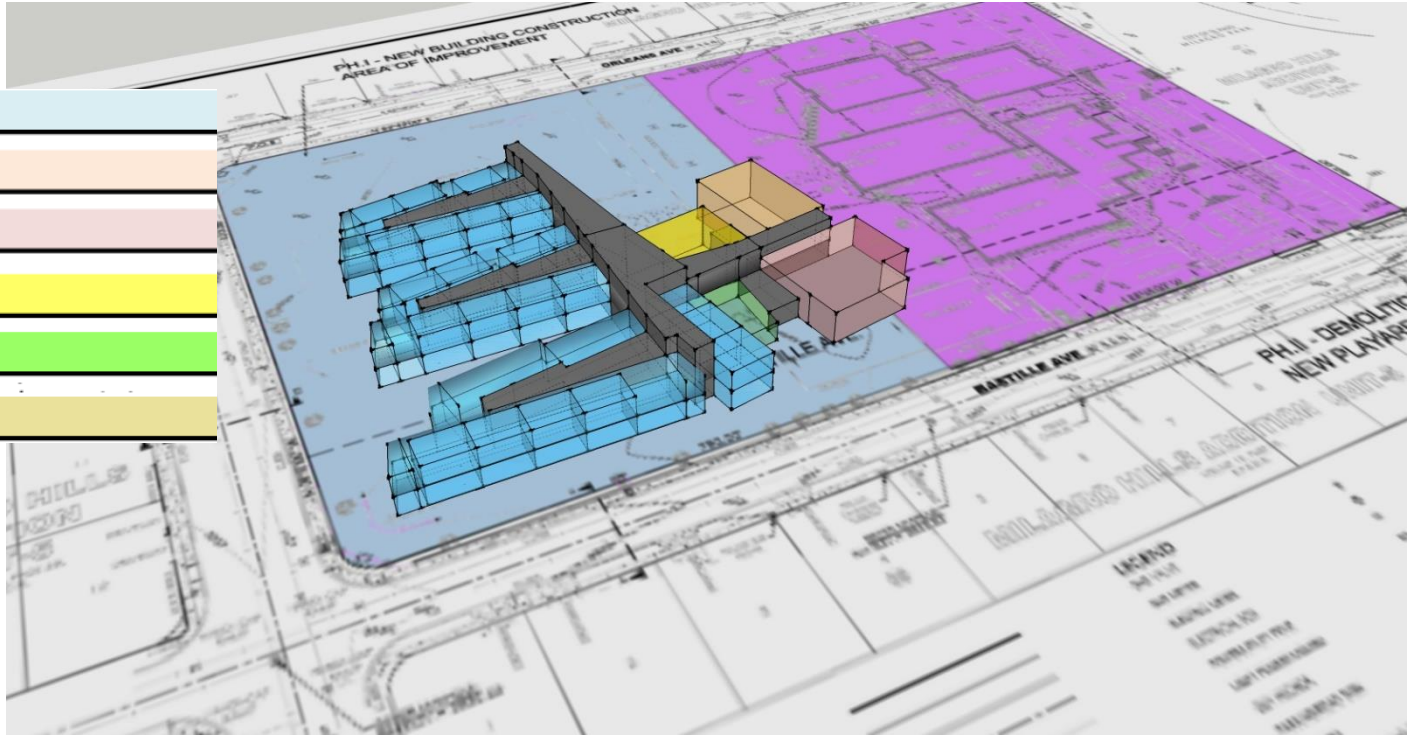
Specialized Classrooms

Physical Education

Media Center

Administration

Food Service



EL PASO

INDEPENDENT SCHOOL DISTRICT

VIGIL &amp; ASSOCIATES

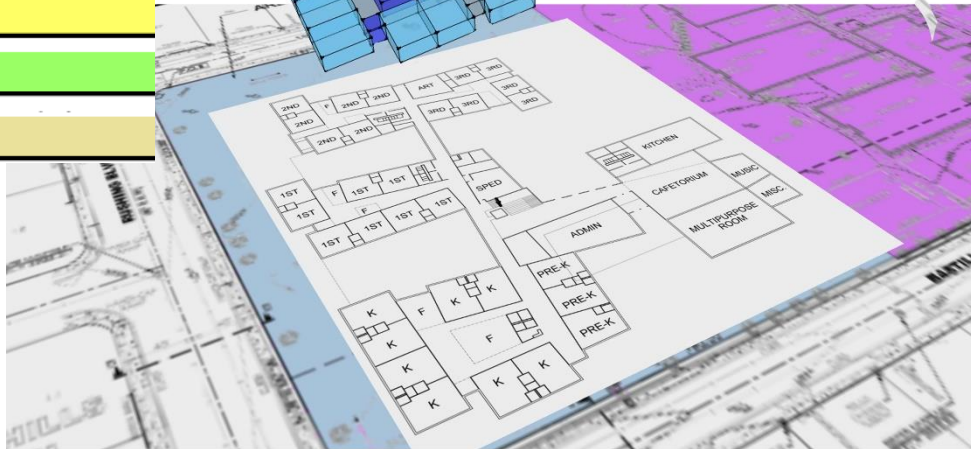
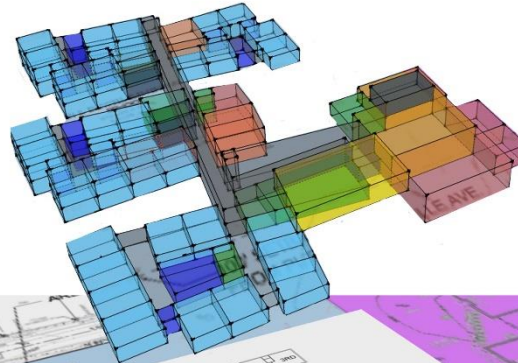
ARCHITECTURAL GROUP, P.C.

575.527.0040 www.VA-architects.com



## CONCEPT C

## Food Service



INDEPENDENT SCHOOL DISTRICT

VIGIL & ASSOCIATES  
ARCHITECTURAL GROUP, P.C.





## SCHEMATIC DESIGN PROCESS DIAGRAMS

## CONCEPT C

Academic Core Space

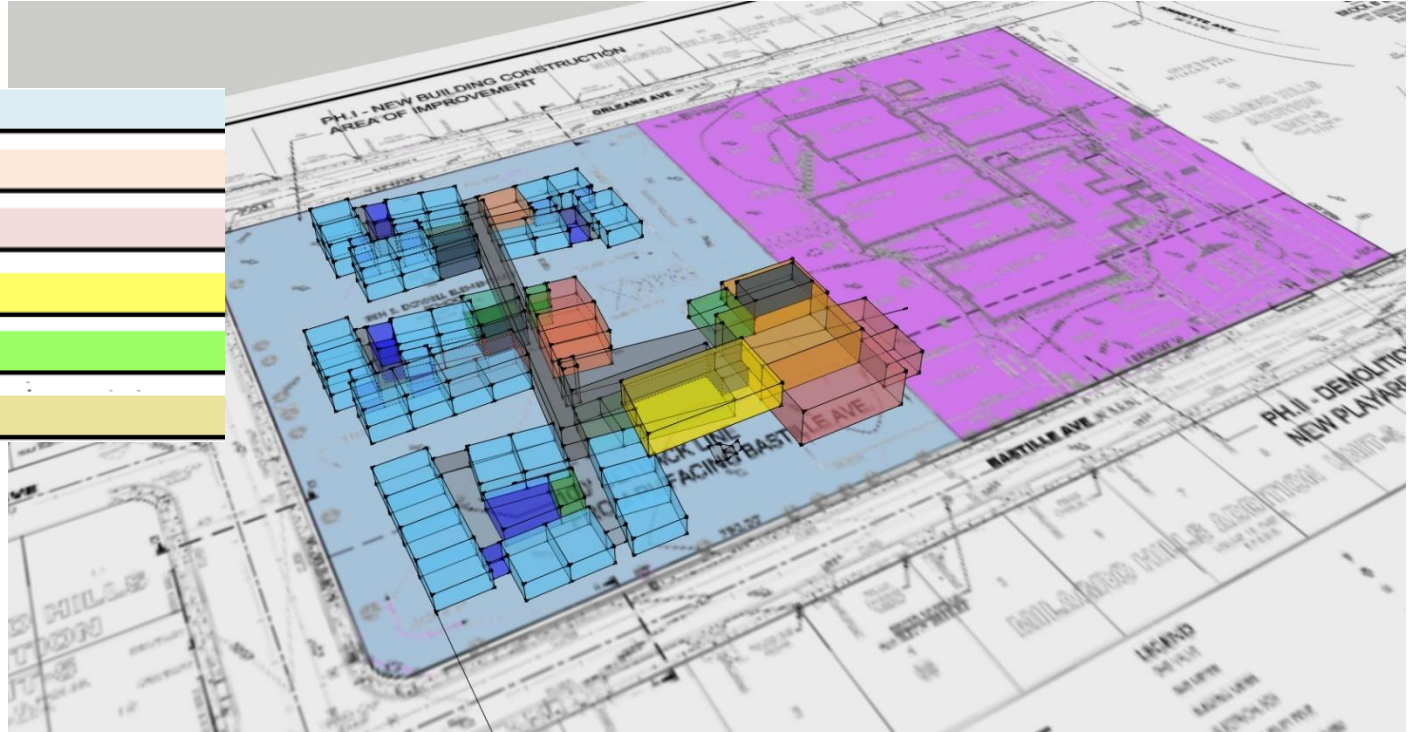
Specialized Classrooms

Physical Education

Media Center

Administration

Food Service



EL PASO

INDEPENDENT SCHOOL DISTRICT

VIGIL &amp; ASSOCIATES

ARCHITECTURAL GROUP, P.C.

575.527.0040 www.VA-architects.com



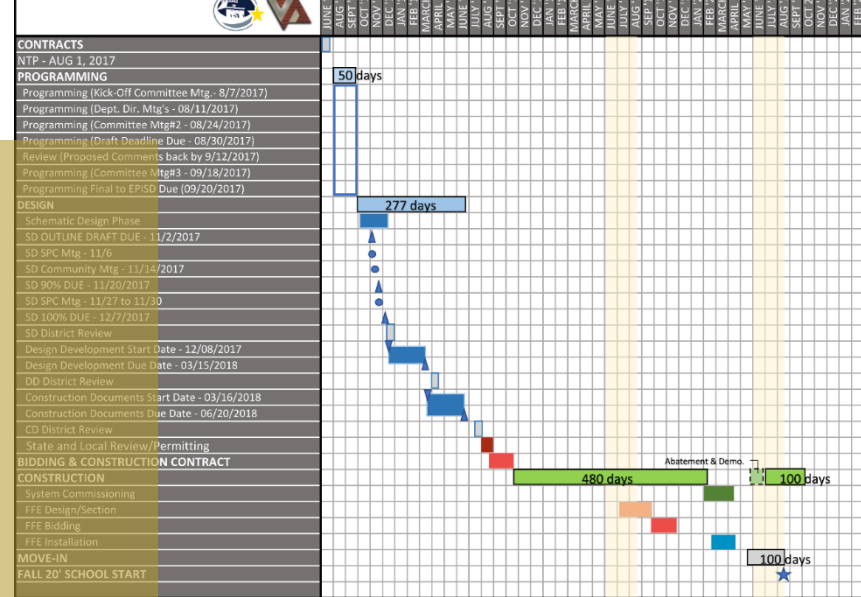


## PROJECT SCHEDULE

06/2018	DESIGN COMPLETE
08/2018	BIDDING
10/2018	START CONSTRUCTION – PHASE 1
02/2020	PHASE 1 COMPLETION
04/2020	SYSTEM COMMISSIONING / FF&E
05/2020	START CONSTRUCTION/DEMO. - PHASE 2
10/2020	PHASE 2 COMPLETION
08/2020	MOVE IN

PROJECT: Dowell Elementary School Consolidating Schuster and Crosby Elementaries for EPISD - UPDATED: Nov. 13, 2017

### Schedule and Milestones



EL PASO

INDEPENDENT SCHOOL DISTRICT

VIGIL & ASSOCIATES

ARCHITECTURAL GROUP, P.C.

575.527.0040 www.VA-architects.com

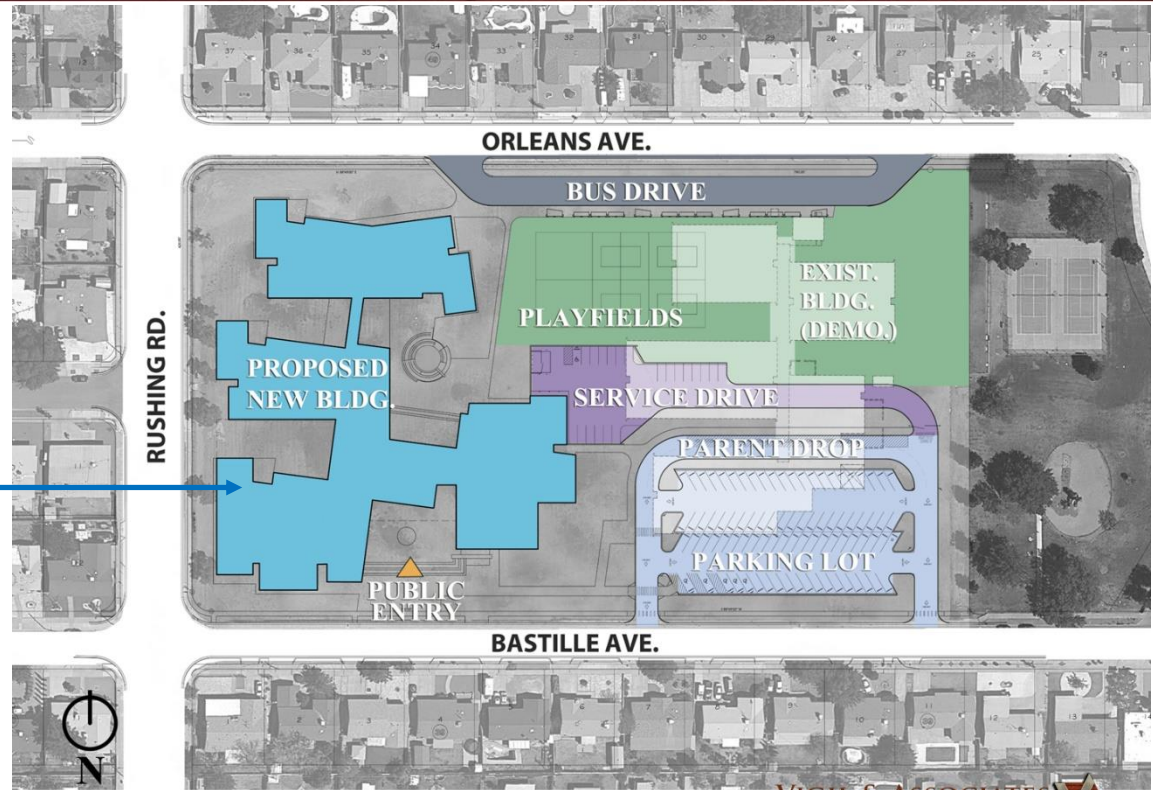


## SCHEMATIC DESIGN

### PHASE 1

### NEW CONSTRUCTION BUILDING

\*Approximately 106,340 sq.ft.



EPISD-DOWELL ELEM. - SCHEMATIC SITE DESIGN

VIGIL & ASSOCIATES  
ARCHITECTURAL GROUP, P.C.



EL PASO

INDEPENDENT SCHOOL DISTRICT

VIGIL & ASSOCIATES

ARCHITECTURAL GROUP, P.C.

575.527.0040 www.VA-architects.com

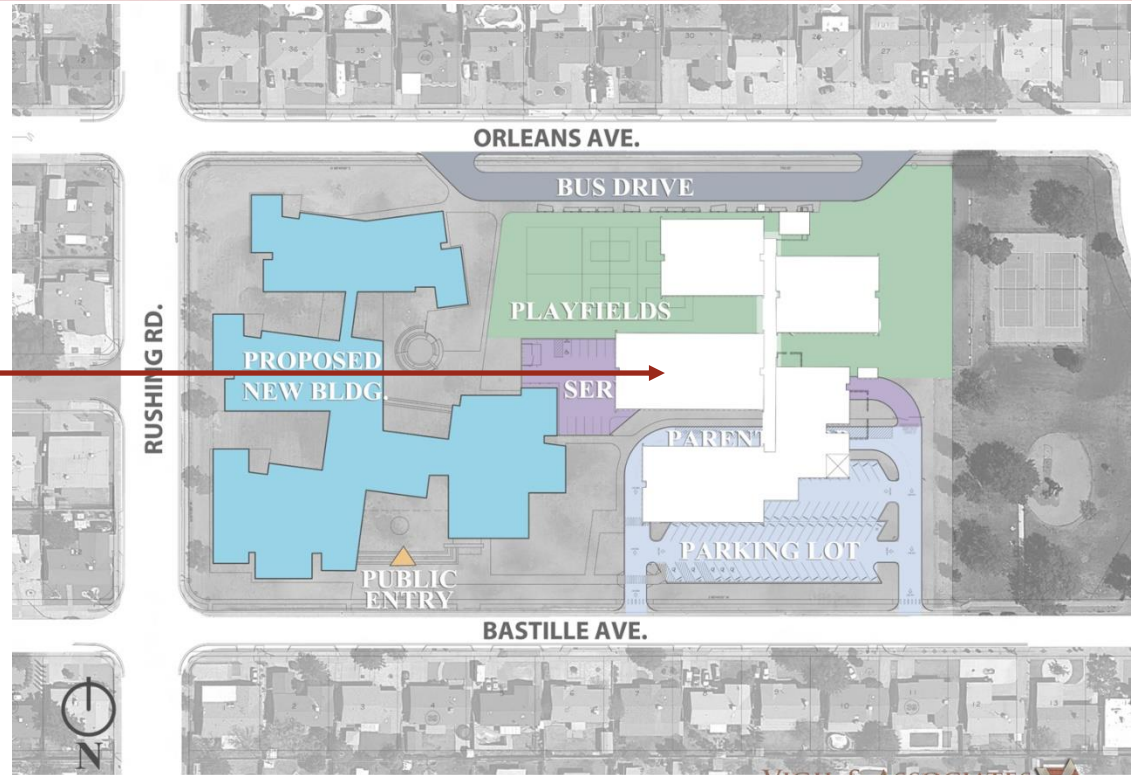


## SCHEMATIC DESIGN

### PHASE 2

#### DEMOLITION OF EXISTING BUILDING

Approximately 52,000 sq.ft.



EPISD-DOWELL ELEM. - SCHEMATIC SITE DESIGN

VIGIL & ASSOCIATES  
ARCHITECTURAL GROUP, P.C.



EL PASO

INDEPENDENT SCHOOL DISTRICT

VIGIL & ASSOCIATES  
ARCHITECTURAL GROUP, P.C.

575.527.0040 www.VA-architects.com

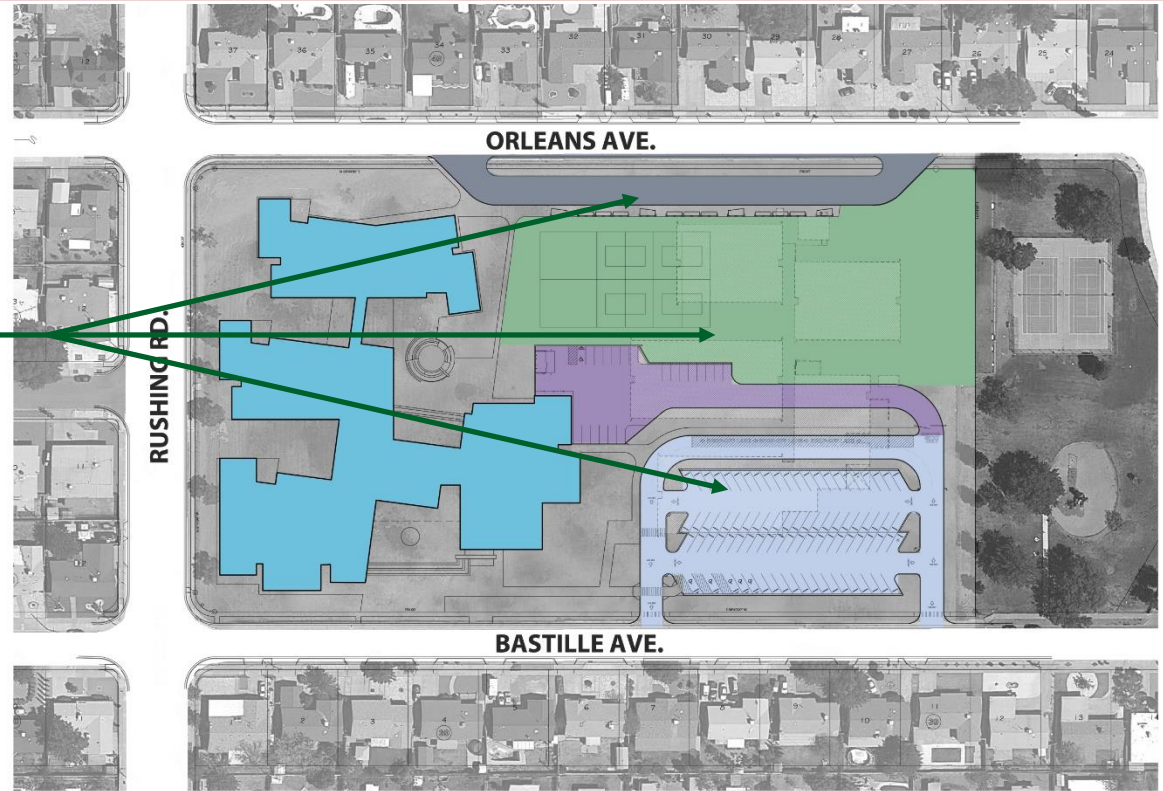




## SCHEMATIC DESIGN

### PHASE 2

NEW PARKING LOTS,  
DRIVEWAY(S),  
PLAYFIELDS &  
PLAYCOURTS



EPISD - DOWELL ELEM. SCHOOL - PROPOSED SITE PLAN - PRELIMINARY SCHEMATIC DESIGN

SCALE = 1:30

VIGIL & ASSOCIATES  
ARCHITECTURAL GROUP P.C.



EL PASO

INDEPENDENT SCHOOL DISTRICT

VIGIL & ASSOCIATES

ARCHITECTURAL GROUP, P.C.

575.527.0040 www.VA-architects.com



# DOWELL ELEMENTARY SCHOOL

11.13.17

## DESIGN CHARRETTE WORKSTATIONS

### BUILDING PLANNING



LEARNING STAIRWAY



KITCHEN & CAFETERIA



FLEXIBLE LEARNING ENVIRONMENT



MEDIA CENTER



ART CLASSROOM



RESTROOM ENTRY



SPECIALIZED INSTRUCTION



STEM LABORATORY



LEARNING STAIRWAY



LEARNING STAIRWAY & FLEX SPACE



EL PASO

INDEPENDENT SCHOOL DISTRICT

VIGIL & ASSOCIATES  
ARCHITECTURAL GROUP, P.C.

575.527.0040 www.VA-architects.com



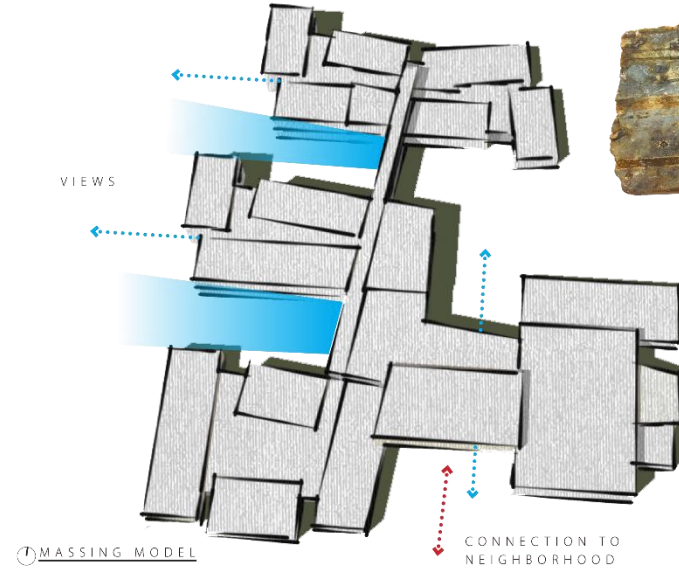


# DOWELL ELEMENTARY SCHOOL

11.13.17

## DESIGN CHARRETTE WORKSTATIONS

FORM & MATERIALS



INSPIRATION & MATERIAL PALETTE



EL PASO

INDEPENDENT SCHOOL DISTRICT

VIGIL & ASSOCIATES  
ARCHITECTURAL GROUP, P.C.

575.527.0040 [www.VA-architects.com](http://www.VA-architects.com)





# DOWELL ELEMENTARY SCHOOL

11.13.17

## DESIGN CHARRETTE WORKSTATIONS

INTERIORS & LEARNING ENVIRONMENTS



BREAK-OUT SPACE



WINDOWS OVERLOOKING LOWER LEVEL



OPERABLE GLASS WALL



OPERABLE WALL BETWEEN CLASSROOMS



TEACHING WALL



TWO-STORY COMMONS



LEARNING TREE



WRITABLE SURFACES



KINDERGARTEN  
RESTROOMS



HANDWASH SINKS



CLERESTORY WINDOWS



EL PASO

INDEPENDENT SCHOOL DISTRICT

VIGIL & ASSOCIATES  
ARCHITECTURAL GROUP, P.C.

575.527.0040 [www.VA-architects.com](http://www.VA-architects.com)



# DOWELLELEMENTARY SCHOOL

11.13.17

## DESIGN CHARRETTE WORKSTATIONS

### LANDSCAPING



OUTDOOR CLASSROOMS



YARD WALL



SITE FURNISHING



YARD WALL



FRAXINUS ANGUSTIFOLIA



PARKINSONIA X CERCIIDIUM



LACEBARK ELM



CHINESE PISTACHE



SHRUBS



MATERIAL PALLETTE



ENGINEERED WOOD CHIPS



EL PASO

INDEPENDENT SCHOOL DISTRICT

VIGIL & ASSOCIATES  
ARCHITECTURAL GROUP, P.C.

575.527.0040 www.VA-architects.com



ADJOURN



EL PASO

INDEPENDENT SCHOOL DISTRICT

VIGIL & ASSOCIATES  
ARCHITECTURAL GROUP, P.C.

575.527.0040 [www.VA-architects.com](http://www.VA-architects.com)

